



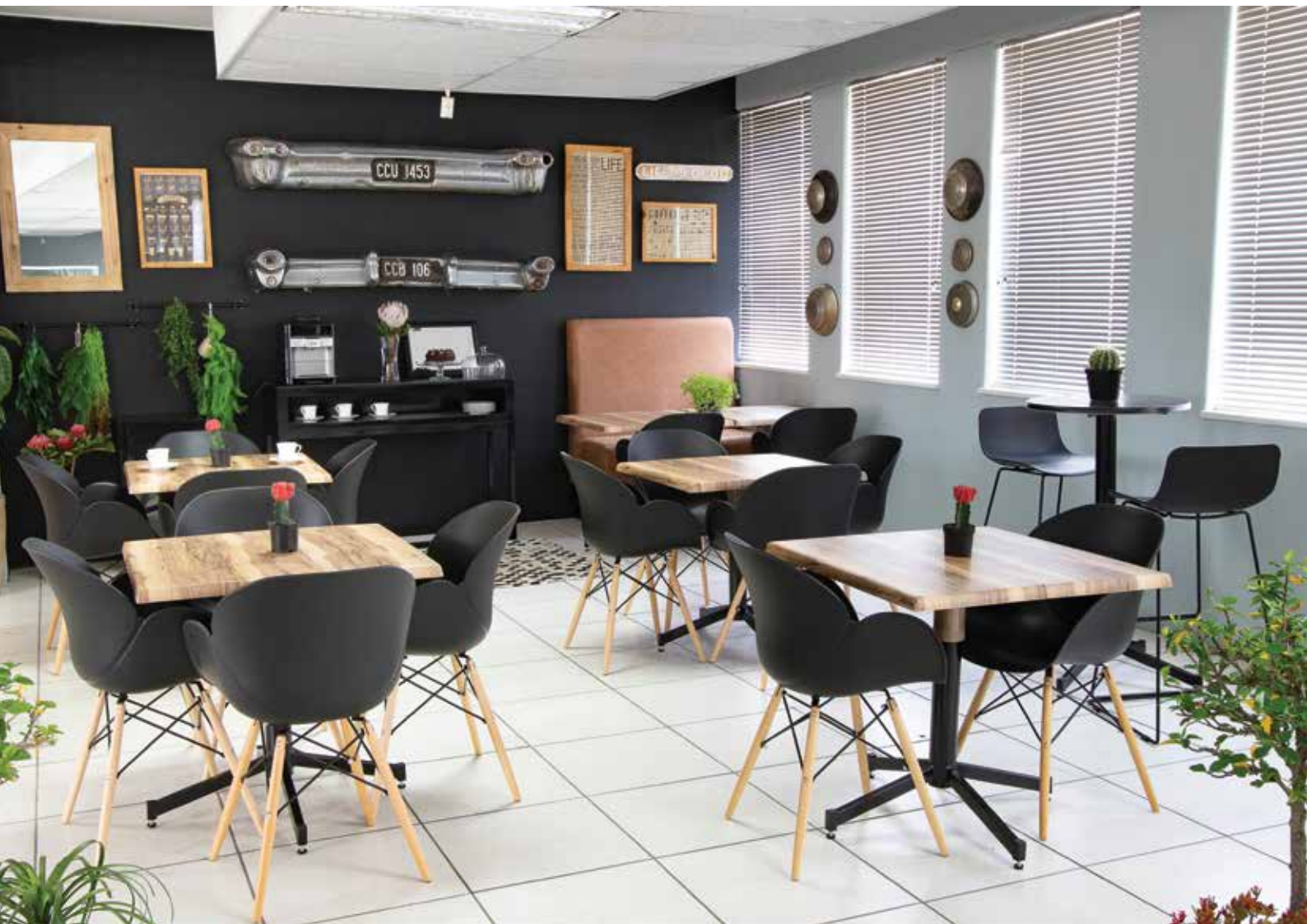
SEATS
AHEAD

chair
express

furniko

SCREEN
DIVISION





Scan here to download the tub chair data sheet



HOLLY

Polypropylene

Chair shell is made from virgin polypropylene

UV resistance up to 2000 hours for patio use

Available colours



HOLLY

Wood

Chair shell is made from virgin polypropylene

UV resistance up to 2000 hours for patio use

Beech wood legs

Available colours



LILY

Polypropylene

Chair shell is made from virgin polypropylene

UV resistance up to 2000 hours for patio use

Available colours





Scan here to download the contract chairs data sheet



SUITABLE FOR OUTDOOR USE



Iris

Chair is made from virgin polypropylene
 Uv resistance up to 2000 hours for patio use
 Suitable for outdoor use

Available colours




Ivy

Polypropylene Shell
 Stackable to approx 6
 Seat height: 450mm
 NOT SUITABLE TO BE LEFT IN RAIN

Available colours



Wanda

Available colours

 Heavy duty chair - takes up to 180kg
 Chair is full molded polypropylene
 Suitable for outdoor use
 Seat Height: 430mm

Libby



Available colours



SUITABLE FOR OUTDOOR USE



Star Side

Star

Polypropylene Shell
 Stackable to approx 6
 Brushed Aluminium Legs
 SUITABLE FOR OUTDOOR USE

Available colours



LOCALLY MANUFACTURED WITH A 2-3 WEEK LEAD TIME



Star Arm



SUITABLE FOR OUTDOOR USE

Barstools

Scan here to download the contract chairs data sheet



Vega

Base: Black
Polypropylene shell
Seat Height: 760mm
Not suitable for outdoor use

Available seat colours



Asteroid

Not suitable for outdoor use
Shell is polypropylene
Legs and foot ring are chromed steel piping

Available colours

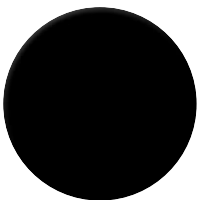


Option of a Chrome or Black PC base

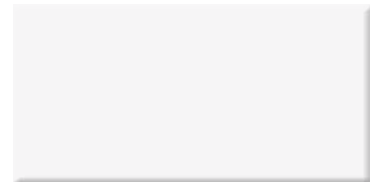
Boost Barstool

Gas height adjustable
Black PU Upholstery

600mm Round



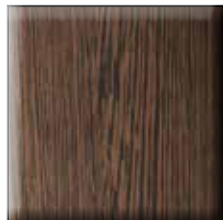
1200mm Rectangular



800mm Square



Indian Sheznan



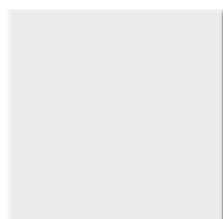
Wenge



Black



White Oak



White



Stone

Werzalit table tops

Scan here to download the contract chairs data sheet



Aluminium

SUITABLE FOR OUTDOOR USE



Scan here to download the aluminium chairs data sheet



The seats' joints are welded and not screwed



Stainless steel is moulded over super wood top, No edging around table



Flamingo



Aluminium pole with cast aluminium base

Diablo



Stainless steel is molded over super wood top, No edging around table

Sangria 800



Sling

Tables



700mm X 1200mm

Aluminium H-base

Grog



Powder coated Table base

Manufactured Locally



Aluminium Table



Aluminium Bar



About us

Seats Ahead Pty Ltd was started nearly 30 years ago in 1994. Incorporated brands include Chair Express, Furniko and Screen Division. The company manufactures and imports a wide range of office chairs, sofas, tub chairs, desking components, airport seating, restaurant tables and chairs, table tops, aluminium bistro items, and screens for desks and office. Operating out of a 10,000 m² in Johannesburg the company is ideally placed to service the South African and neighbouring county markets. The company is driven by a combination of competitive pricing, quality products and Service. Its wide customer base is serviced by dedicated and experienced staff, a strong trading history and a reliable network of carefully selected local and international suppliers. The company stays abreast of international trends that ensures its customers are in turn exposed to the very best that is available in the market that it trades in.

www.seatsahead.co.za



Scan here for Google maps

13th Edition

www.seatsahead.co.za • www.screendivision.co.za

SHOWROOM | FACTORY | WAREHOUSE
44 Hulbert Rd, Cnr Rosettenville Rd, New Centre, Johannesburg
Tel: +27 11 434 0444