



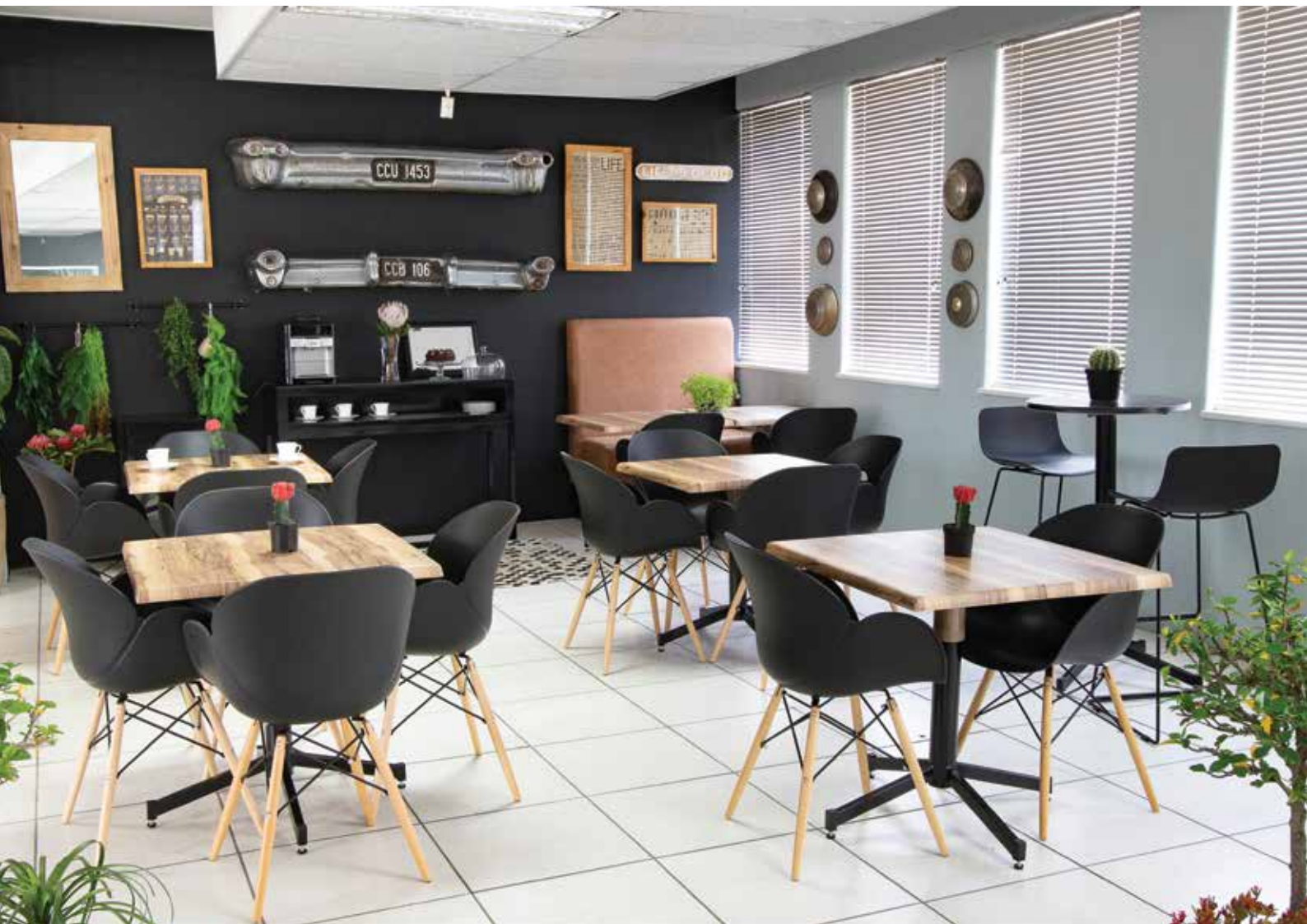
SEATS
AHEAD

chair
express

furniko

SCREEN
DIVISION







Scan here to
download the
Falcon ergonomic
data sheet

FALCON



CE

SPINE



SA



BOLT



Integrated Back Frame

Weight bearing support, impact resistant nylon material with durable mesh fabric. Accelerates air circulation, while eliminating heat and humidity.

Ergonomic Design For Stress Alleviation

Designed to the human Spine. Providing comfortable support in any seating position



Simple Synchronised Mechanism

- Back Tilting 23 ° /5 Positions
- BIFMA Approved
- Seat Height Adjustment:100mm
- Seat Slider 45mm/8 Positions



23°/5

- Tilting Mode
- Extensive Adjustment Range
- Ergonomic Support



Ultra Soft Seat

Seat Slider Depth Adjustment



Seat Slider Backwards and Forwards
Adjustment: 45mm/ 8 Positions



Turn tension knob to adjust the degree of tilting tightness

Turn the knob clockwise to lock back tilting position and counterclockwise to unlock back tilting position

Mesh



Scan here to
download the
mesh back
chairs data sheet

Flame

Black mesh back with Black fabric seat



CE

Calvi

◀ Back Fabric: Black Mesh
Seat Fabric: Weavers World
Blend – Bean



Back Fabric: ▶
Black Mesh
Seat Fabric: HTM
@work – Grey



SA

Santorini Heavy Duty

Takes up to 150kg
24hour usage

Back fabric :
Black Mesh
Seat Fabric :
Weavers World –
Pixel – Air



SA

Santorini

Back Fabric:
White Mesh
Seat Fabric:
City- Bench, The Mill



Operator



Visitors

SA

Venus

◀ Back Fabric :Black Mesh

Back Fabric :Grey Mesh ▶

◀ Seat Fabric : Weavers World – Vulcan - Black ▶



Visitors



Medium Back



High Back

SA



High Back



Visitors



Medium Back

SA



Operator

Aylee

Back Fabric: Red Mesh
Seat Fabric: Weavers
World, Vulcan

Available Mesh colours



Visitors

SA

Siena

Back Fabric: Black Mesh,
Weavers World, Vulcan



Medium Back



High Back

SA

Bolt



CE

Trinidad

Back Fabric: Black mesh
Seat Fabric: Stonewash-
Graphite, Helm Textile



High Back



Visitors



Medium Back

SA

Mesh



Scan here to
download the
mesh back
chairs data sheet

Bali

Back Fabric :Black Mesh
Seat Fabric :HTM –
Fusion – Lime



Visitors



Medium Back



High Back

SA

Canary

Back & Seat Fabric: Custom



High Back



Medium Back



Visitors

SA

Orion

Back Fabric :
Black Mesh
Seat Fabric:
Pixel - Columbia,
Weavers World



Visitors



Medium Back



High Back

SA

Falcon



High Back



Visitors

CE



Plush



Mesh

CE



Albatross



CE



Twist

Black non woven mesh back
Black fabric seat
Weight capacity up to 120kg

Operators



Visitors

CE



Brawn
Heavy Duty

Takes up to 225kg
24hour usage

Black non woven mesh back
Black fabric seat



CE

Heavy Duty



Scan here
to download
Heavy duty
data sheet

Texas Heavy Duty

Takes up to 150kg
24hour usage

High Back Fabric:

Back Fabric: Vulcan - Grey, Weavers World
Seat Fabric: Vulcan - Black, Weavers World

Medium Back Fabric:

Back Fabric: Soviet - Vulcan, Weavers World
Seat Fabric: Vulcan - Black, Weavers World



SA

Brawn Heavy Duty

Takes up to 225kg
24hour usage



Black non woven mesh back

Black fabric seat

Black powder coated
4 legged steel frame



CE

Goliath Heavy Duty

Takes up to 150kg
24hour usage

Not Stackable

Back Fabric : HTM - @work - 14 Grey
Seat Fabric : HTM - @work -14 Grey



SA

Scan here
to download
Heavy duty
data sheet



Santorini Heavy Duty

Takes up to 150kg
24hour usage

Back fabric :Black Mesh
Seat Fabric :Weavers World – Pixel – Air

SA

Big 'n Tall Heavy Duty

Takes up to 180kg

Cabel Control Swivel & tilt mechanism
with 1 position lock - Gas height adjuster

Full Loop Upholstered armrests

Spring Padded Seat

Full PVC Upholstery



CE



High Back



Visitors

President Heavy Duty

Takes up to 160kg

Combo of Bonded leather on
the front & PVC on the back

CE



Scan here to download executive data sheet

High Back



Medium Back



Visitors
4 Legged



Visitors Wood
Integral Sleigh



Salvador Wood

Standard in Oak
Back and Seat Fabric:
SL29, Italian

SA

Salvador Chrome

Back and Seat Fabric:
SL29, Italian

High Back



Medium Back



Visitors
4 Legged



Visitors Chrome
Integral Sleigh



Visitors



SA

Salvador Polyurethane

Back and Seat Fabric:
SL29, Italian

High Back



SA



Medium Back



Visitors

Tripoli

Back & Seat Fabric:
SL29, Italian



FUR

Moscow

Back & Seat Fabric:
SL29, Italian



FUR

Adda Wood

Standard in Oak
Back and Seat:
SL29, Italian

High Back



Medium Back



Visitors
4 legged



Visitors
Integral



SA

Judges

Italian, SL29

High Back



FUR



Visitors
Italian, SL57



Magistrate

SL91 bonded



FUR

Angelo

Back and Seat Fabric:
SL29, Italian



SA

Pimento Wood

Standard in Oak
Back and Seat Fabric:
SL29, Italian



SA



Pimento Polyurethane

Back and Seat Fabric:
SL29, Italian

SA



Mandeville

Back and Seat Fabric: Italian,
SL28 White Bonded Leather

SA



Ombra

Back and Seat Fabric:
Kaplan Quality - Black Leather

SA



Scan here
to download
managers data
sheet

Lucea

Back Fabric: Vulcan - DK Claret, Weavers World
Seat Fabric: Vulcan - Black, Weavers World



Visitors

2000

3000

SA



High Back



Medium Back



Visitors

Aruba

Back: Vulcan -
Mistral, Weavers World
Seat: Vulcan -
Black, Weavers World

SA

Cayman

Back Fabric : Weavers world –
Vulcan - Hyacinth
Seat fabric : Weavers World –
Vulcan – Black



Visitors



Medium Back



High Back

SA



High Back



Medium Back



Visitors

Calypso Syncro

Back Fabric: Vulcan Antarctic,
Weavers World
Seat Fabric: Vulcan Black,
Weavers World

SA



High Back



Medium Back



Visitors

Morant Wood

Standard in Oak

Back Fabric: Vulcan - Marine, Weavers World
Seat Fabric: Vulcan - Black, Weavers World

SA

Morant Chrome

Back Fabric: Vulcan - Atlantis, Weavers World
Seat Fabric: Vulcan - Black, Weavers World



Visitors



Medium Back



High Back

SA



High Back



Medium Back



Visitors

Monaco

Back Fabric: Vulcan - Dusk, Weavers World
Seat Fabric: Vulcan - Black, Weavers World

SA

Zambezi

Back Fabric: Vulcan - Hyacinth, Weavers World
Seat Fabric: Vulcan - Black, Weavers World



Visitors



Medium Back



High Back

SA



Scan here
to download
managers data
sheet



High Back



Visitors

Mirage

Weight capacity up to 120kg
Full PVC upholstery

CE

Blaze

Weight capacity up to 120kg
Full PVC upholstery



Visitors



High Back

CE



High Back

Stallion

Weight capacity up to 120kg
Leather Combo: Cow top leather on
the front & leatherette on the back

CE

Colt

Weight capacity up to 120kg
Bonded Leather upholstery



High Back



CE

Scan here
to download
economy range
data sheet



Morant

Polyurethane

Back Fabric: Vulcan -
Petrol, Weavers World
Seat Fabric: Vulcan -
Black, Weavers World



Visitors



Medium Back



High Back

SA



High Back



Medium Back



Visitors Arm

Montego

Back Fabric: Vulcan - Grey, Weavers World
Seat Fabric: Vulcan - Black, Weavers World

SA

Kingston

Back Fabric: Vulcan Marine, Weavers World
Seat Fabric: Vulcan - Black, Weavers World



Visitors



Medium Back



High Back

SA



Maxi



Operators



Visitors

Concorde

Weight capacity up to 110kg
Full PVC upholstery

CE

Rocket

Weight capacity up to 110kg
Full PVC (Vynil) upholstery



Operators

CE



High Back

Spark

Weight capacity up to 120kg
Full PVC (Vynil) upholstery

CE

Typist



Scan here to
download typist
& operators
data sheet

Flame

Black mesh back with Black fabric seat



CE

Calvi

Back Fabric: Black Mesh
Seat Fabric: Weavers World
Blend – Bean



Back Fabric: Black Mesh
Seat Fabric: HTM
@work – Grey



SA



Cancun

Back Fabric:
Weavers World,
Vulcan Teal

Seat Fabric:
Weavers World,
Vulcan Black

SA

Lucea 1000

Back Fabric:
Weavers World,
Vulcan Garnet

Seat Fabric:
Weavers World,
Vulcan Black



SA



Lucea 1500

Back Fabric:
Weavers World,
Vulcan Sage

Seat Fabric:
Weavers World,
Vulcan Black

SA

Lucea 1800

Back Fabric:
Weavers World,
Vulcan Grape

Seat Fabric:
Weavers World,
Vulcan Black



SA

Industrial Typist

Also Available in "Speedline"

Scan here to
download
industrial typist
range data sheet



Brixton

Draughtsman Conversion with Chrome Footring



Bristol

Standard without
Draughtsman Conversion



Blackpool

option of LC 40 arm only

SA

Scan here
to download
stackers range
data sheet



Plastic Seat and Back
Plastic



Stacker Range

Seat & Back Fabric: Vulcan - Midnight, Weavers World
Base: Black Powder Coated



Two seater
Stacker Bench

Banquet

Back Fabric :
HTM Black Contract
Seat Fabric :
HTM Black Contract



Back Fabric : HTM –
Slub Plain – Ice Grey
Seat Fabric : HTM –
Slub Plain – Ice Grey



Revolution Stacker

Seat: Solid plastic
Back: Black, Perforated Plastic
Black power coated frame

Seat: Upholstered seat,
Vulcan, Wasabi
Back: Black,
Perforated Plastic
Black power coated frame



Interlinking seats Stackable to approximately 18



Goliath Heavy Duty

Takes up to 150kg
24hour usage

Back Fabric : HTM - @work – 14 Grey
Seat Fabric : HTM - @work -14 Grey

Not Stackable



48 hour pick up or
5 day delivery



Scan here to
download
speedline range
data sheet

Montego



High Back



Medium Back



Visitors

Available in BLACK CONTRACT ONLY

Please order all Speedline Chairs
separate from other "normal" chairs.

Speedline is for orders smaller
than 10 units. For larger orders the
standard lead time applies.

Lucea 1500



Cancun



Calvi



Spine



Stacker 500



Morant PU

Option of an
LC 40 Arm ONLY



Visitors



Medium Back



High Back

Kingston



High Back



Medium Back



Visitors arm



Visitors side



Brixton



Bristol



Blackpool

SA

Soft Seating



Judges



St Helena



Vienna

Available in Black Bonded Leather

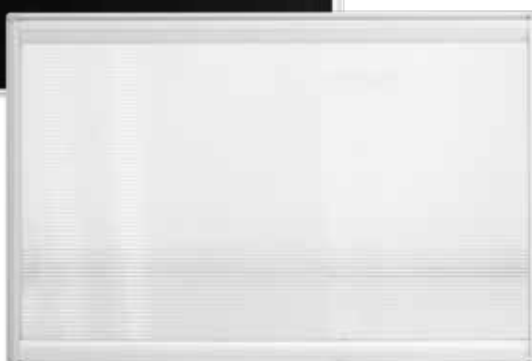
FUR

Screens



Contract Black screens only
10 or less 5 - 7 days collection
or 10 days delivery

Available in 3 sizes -
Width: 1800mm x Height: 500mm
Width: 1600mm x Height: 500mm
Width: 1200mm x Height: 500mm



Clear Polycarbonate Screens only
10 or less 5-7 days collection
or 10 days delivery

Available in 3 sizes -
Width: 600mm x Height: 500mm
Width: 800mm x Height: 500mm
Width: 1000mm x Height: 500mm

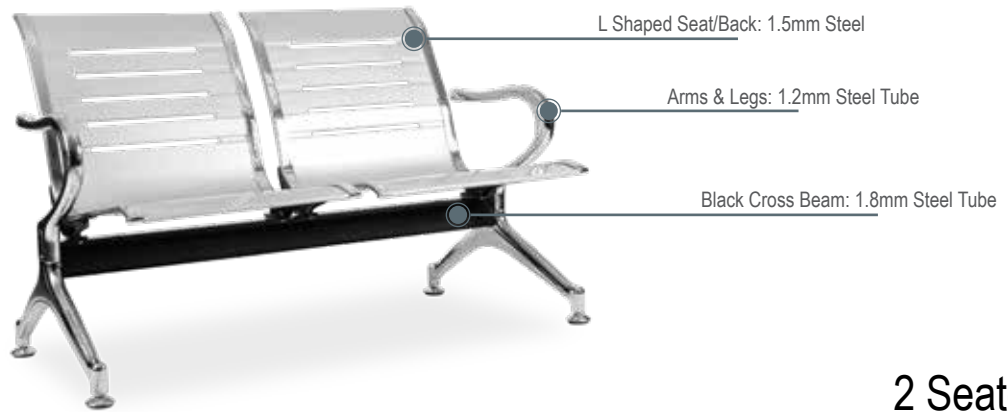
SD

Public Seating

Available in a 2, 3, 4, and 5 Seater.



Scan here to
download Public
seating's data
sheet



Single work station

Extendable width from 1200mm-1900mm
Depth: 754mm (for top size: 750mm)
Leg Tube 55mm x 55mm x 1.5mm thick
Cross Beam 40mm x 40mm x 1.5mm thick



Managerial Extention

Extendable width from 700mm-1000mm
Depth of Extension: 490mm (for top size: 500mm)
Leg Tube 55mm x 55mm x 1.5mm thick
Cross Beam 40mm x 40mm x 1.5mm thick



Scan here to
download the
work stations
data sheet



4-Way Cluster

Extendable width from 2500mm-3900mm
Depth: 1490mm (for 2 x top size: 750mm)
Leg Tube 55mm x 55mm x 1.5mm thick
Cross Beam 40mm x 40mm x 1.5mm thick



2-Way Cluster

Extendable width from 1200mm-1900mm
Depth: 1490mm (for top size: 750mm)
Leg Tube 55mm x 55mm x 1.5mm thick
Cross Beam 40mm x 40mm x 1.5mm thick



Cable Riser

180mm x 87mm x 725mm H
Cut out to fit 4 x Plug Set
Size: 49mm x 152mm
Connects with brackets to
the under side of top



Foldable Cable Tray

1000mm x 160mm x 98mm
Steel thickness 0.7mm
Foldable Cable Tray
White Plug Set not included





About us

Seats Ahead Pty Ltd was started nearly 30 years ago in 1994. Incorporated brands include Chair Express, Furniko and Screen Division. The company manufactures and imports a wide range of office chairs, sofas, tub chairs, desking components, airport seating, restaurant tables and chairs, table tops, aluminium bistro items, and screens for desks and office. Operating out of a 10,000 m2 in Johannesburg the company is ideally placed to service the South African and neighbouring county markets. The company is driven by a combination of competitive pricing, quality products and Service. Its wide customer base is serviced by dedicated and experienced staff, a strong trading history and a reliable network of carefully selected local and international suppliers. The company stays abreast of international trends that ensures its customers are in turn exposed to the very best that is available in the market that it trades in.

www.seatsahead.co.za



Scan here for Google maps

13th Edition

www.seatsahead.co.za • www.screendivision.co.za

SHOWROOM | FACTORY | WAREHOUSE
44 Hulbert Rd, Cnr Rosettenville Rd, New Centre, Johannesburg
Tel: +27 11 434 0444