



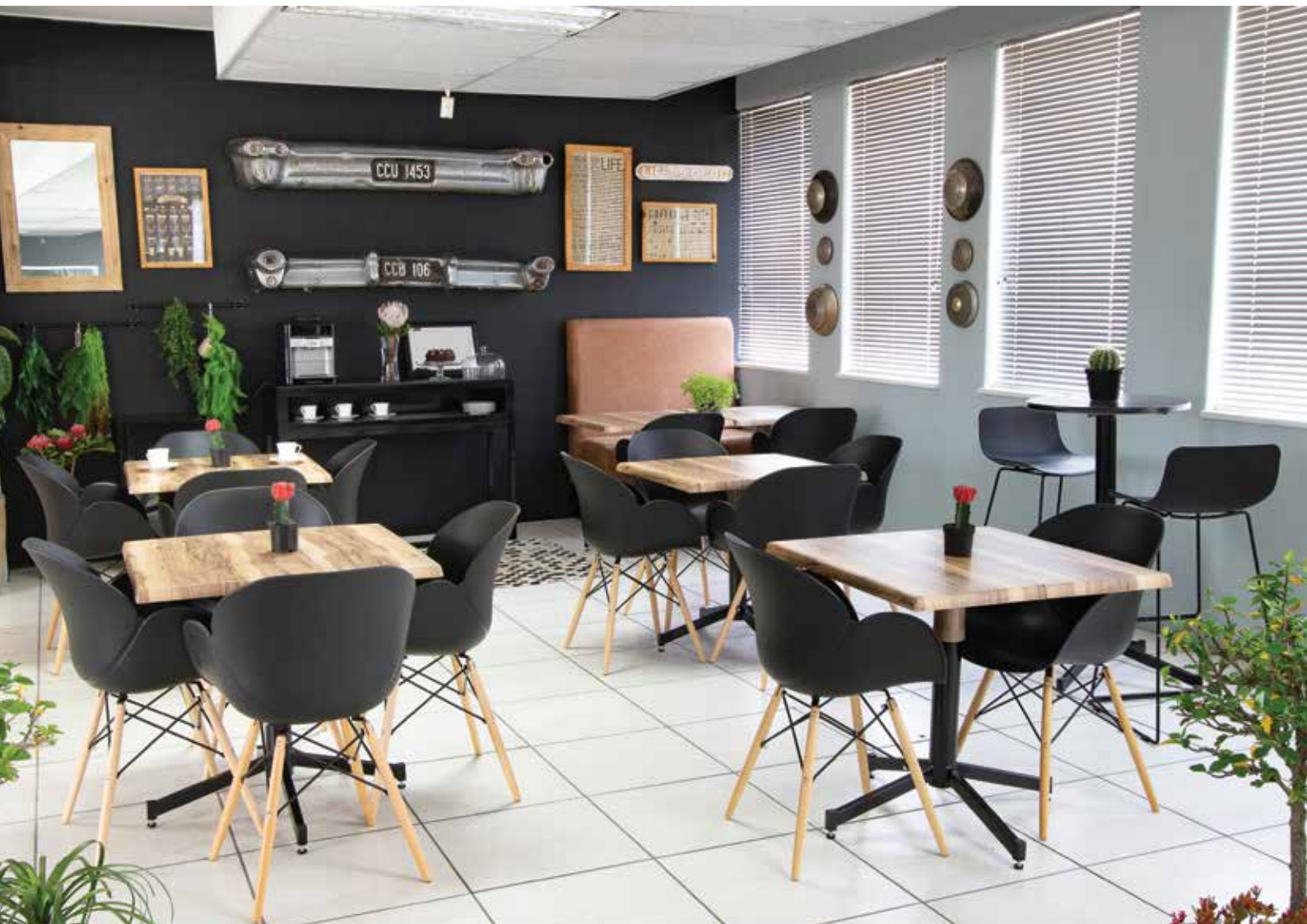
SEATS
AHEAD

chair
express

furniko

SCREEN
DIVISION





Soft Seating

Please note that this unit comprises of three parts - a corner section and two sections with one arm.
Should you require a different size/configuration please contact us for a quote.



Scan here to download the soft seating data sheet

Peru Corner



Back, Seat & Shell: SL 84, Italian



Double Seater

Lima

Back, Seat & Shell: SL 108, Italian



Single Seater

Victoria

Back, Seat & Shell Fabric: SL401, Italian



Single Seater



Double Seater



Single Slipper

Seat & Back: Fusion - Teal , Helm Textiles

Havana

Seat & Back: Fusion - Teal , Helm Textiles
Arms: Contract Black, Cedarbrook



Double Seater



Single Seater

Norway

Single Seater ▶

Outer Shell: Pixel - Fashion, Weavers World
Inner Chair: Pixel - Armour, Weavers World



◀ Double Seater

Outer Shell: Pixel - Fashion, Weavers World
Inner Chair: Pixel - Eminence, Weavers World



Komodo

Seat & Back Fabric: Weavers World, Vulcan, Soviet, red
Shell Fabric: Weavers World, Vulcan, Black



Double Seater



Single Seater

Soft Seating

Scan here to download the soft seating data sheet



Oslo

Back, Seat & Shell: Architex - Oscar Copan 01 -23, Weavers World



Double Seater



Single Seater

Sofia

Back, Seat & Shell Fabric: Samson Slick TM13359 - The Mill Fabrics



Single Seater



Double Seater

St. Helena

Carcass: Mantilla - 10 - Antigue Home Fabrics
Back & Seat Cushions: Velvo - Home Fabrics



Double Seater



Single Seater

Milan

Back, Seat & Shell: Miracle 1016, Bartlett & Dunster



Single Seater



Double Seater



Scan here to download the soft seating data sheet

Nevis

Back/Arms: The Mill - Headline Puddle – Stripe Vertical
Seat: The Mill – Work It – Black



Single Seater



Double Seater

Zanzibar

Back, Seat & Shell Fabric: The Mill, Coco Chenille, Plum
Legs: Wooden Oak Legs



Double Seater



Single Seater

Durban

Seat Fabric: Luxury Gold, The Mill Fabrics
Shell Fabric: Weavers Architex – Ghri Vuitton – Luxury old gold TM13094



Double Seater



Single Seater

Barberton

Single Seater



Outside Shell: SL91, Italtan
Cushions: Kazan - Puddle, Weavers World

Double Seater



Washington

Back/Seat/Arms: SL29, italtan



Double



Corner



Ottoman



Middle



Auckland

Soft Seating

Back, Seat & Shell Fabric:
Velvo - Feather -19, Home Fabrics

Scan here to
download the
soft seating
data sheet



Double Seater



Single Seater

Carcass: Ballantyne - Mackaral, The Mill Fabrics
Seat: Architex - Foster Axe, Weavers World

Carcass: Ballantyne - Himalayan Salt, The Mill Fabrics
Seat: Architex - Foster Axe, Weavers World

Kiev



Single Seater



Double Seater



Sabina Double

Carcass & Seat: Custom

Tokyo

Carcass & Seat: Pixel - Opal,
Weavers World



London

Back & Shell Fabric: Route - Aqua, Helm Textiles
Seat Fabric: Slub Plain - Pool 10129, HelmTextile



Atlantic

Shell: Fireworks - Celeb - 16 Lake
- Home Fabrics
Seat: Casual - Duckegg -18 - Home Fabrics





Scan here to download the occasional chairs data sheet

Tristan

Carcass & Seat: Coco Chennel - Lilac
- The Mill Fabrics



Sabina Tub

Carcass & Seat: Custom



Delhi

Carcass Fabric: Custom
Seat Fabric: SL400, italian



Beijing

Carcass & Seat: Ditzzy Black Slate
TM13583 - The Mill Fabrics



Vienna

Carcass & Seat: Suri - Echo
TM 14557 - The Mill Fabrics



Pippa

Carcass & Seat:
The Mill - Luxury Mallet



Niagara

Back Fabric & Seat: Pixel - Citrine
1003, Weavers World



Giza

Back Fabric & Seat: The Mill,
Retro, Caribbean Queen





Barcelona

Back, Seat & Shell Fabric: Custom

Total Height: 1420mm
Total Width: 790mm
Total Depth: 830mm



Berlin

Back, Seat & Shell Fabric: Custom

Total Height: 1380mm
Total Width: 960mm
Total Depth: 700mm



Tahiti

Back, Seat & Shell Fabric: Italtan, SL 108



Tahiti with buttons

Back, Seat & Shell Fabric: Liquid - Tinta, Weavers World



Wellington

Outside Back & Front Facing: Fireworks – Gala – 13 Lagoon
Inside Arms & Seat: Peak – Peak 20 – Captain

Chit Chat

Shell Fabric: Festivity – Emporer 08 - Home Fabrics
Back & Seat: Casual – 31 Passion- Home Fabrics



Total Width: 1400mm
Total Depth: 830mm



Gossip

Total Weight: 4100mm
Total Depth: 800mm



Ottomans



Scan here to download the ottomans data sheet



Pentagon

Slub plain, Helm textiles

Total Height: 510mm

Total Width: 600mm

Standard with 5 small black stumps



Concave

Ceasar -Weavers World

Total Height: 500mm, Total Width: 1700mm

Standard with 8 small black stumps

Slub Plain Teal, Helm Textiles



Rectangular

Standard with black stumps

Rectangular Ottoman

Slub Plain Pool, Helm Textiles



Round Ottoman

Slub Plain - Acid, Helm Textiles

Quartz

Trail, Helm Textiles



Miami Quarter

Slub Plain Orange, Helm Textiles

Miami End

Slub Plain Pool, Helm Textiles



Rome

Back, Shell & Seat Fabric:
Tribal Ivory TM14555 - The Mill Fabrics



Scan here to
download the dining
& restaurant chairs
data sheet



Israel

Back & Seat Fabric:
Custom



Paisley

Back & Seat Fabric:
Miracle 1016, Bartlett
& Dunster



Perth

Back & Seat Fabric:
Cavalry, Parma 20,
Home Fabrics



Athens

Back & Seat Fabric:
City, bench, The Mill



Verona

Back & Seat Fabric:
Eden -03, Bartlett & Dunster



Calgary

Back & Seat Fabric:
Esme - Aqua, Hertex Fabrics



Café Bench

Back & Seat: Custom



Restaurant Bench

Back & Seat: SL 71, Italian





Cyprus

Outside Shell: Festivity – Leaf 12 - Home Fabrics
Inside Shell and seat cushion: Peak - Turtle 27 - Home Fabrics



Salem

Shell, Back & Seat Fabric:
Weavers World, Digital, Web, 8848



Riga

Back, Seat & Shell Fabric:
Ballantyne - Kale TM14268,
The Mill Fabrics



Back, Seat & Shell Fabric:
Custom



Lido

Back and Seat Fabric:
Architex - Meier Ghetty, Weavers World



Talsi

Back & Back Fabric:
Custom

Seat Width: 480mm
Seat Depth: 470mm



Base options

- Lido
- Riga
- Talsi



Cross



Spider



Wood



About us

Seats Ahead Pty Ltd was started nearly 30 years ago in 1994. Incorporated brands include Chair Express, Furniko and Screen Division. The company manufactures and imports a wide range of office chairs, sofas, tub chairs, desking components, airport seating, restaurant tables and chairs, table tops, aluminium bistro items, and screens for desks and office. Operating out of a 10,000 m² in Johannesburg the company is ideally placed to service the South African and neighbouring county markets. The company is driven by a combination of competitive pricing, quality products and Service. Its wide customer base is serviced by dedicated and experienced staff, a strong trading history and a reliable network of carefully selected local and international suppliers. The company stays abreast of international trends that ensures its customers are in turn exposed to the very best that is available in the market that it trades in.

www.seatsahead.co.za



Scan here for Google maps

13th Edition

www.seatsahead.co.za • www.screendivision.co.za

SHOWROOM | FACTORY | WAREHOUSE
44 Hulbert Rd, Cnr Rosettenville Rd, New Centre, Johannesburg

Tel: +27 11 434 0444